

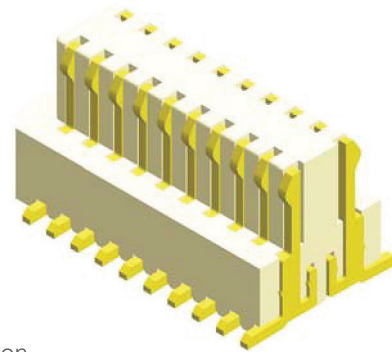
# Board to Board

pitch 0.80mm (0.03") | Male | S.M.T. | Locating peg

GBBC241  
GBBC242  
GBBC243  
GBBC244  
GBBC245  
GBBC246 Series

## Specifications

Current Rating : 0.5 Ampere  
Insulation Resistance : 500 MΩ Min  
Dielectric Withstanding : 200V AC  
Contact Resistance : 20 mΩ Max  
Operating Temperature : -40°C to +105°C



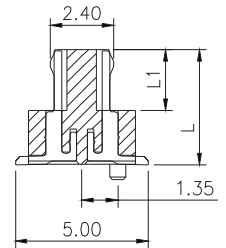
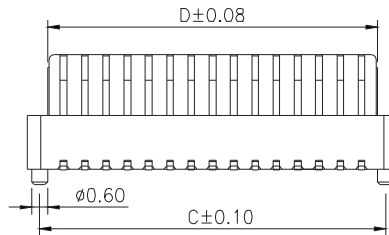
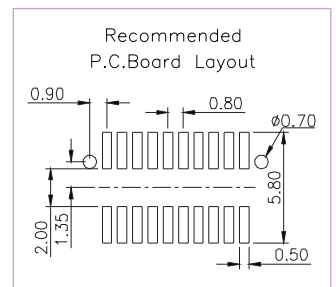
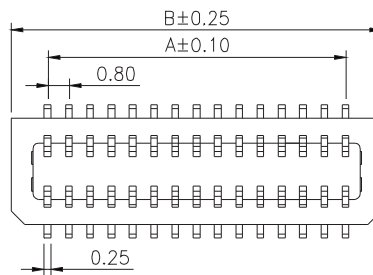
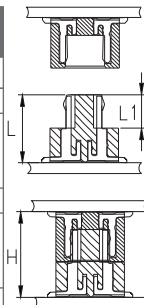
## Materials

Contact Material : Phosphor Bronze  
Insulation Material : High Temperature Thermoplastic, 94V-0 Nylon

All materials must meet Greenconn's requirements for environmental protection.

## Mating with

Males Series	Females Series	H	Page
GBBC241	CBBC201	--	A02
	CBBC241	4.40	A03
	CBBC242	4.90	
	CBBC243	5.40	
GBBC242	CBBC201	--	A02
	CBBC241	4.90	A03
	CBBC242	5.40	
	CBBC243	5.90	
GBBC243	CBBC201	--	A02
	CBBC242	4.40	A03
	CBBC243	4.90	
GBBC244	CBBC201	--	A02
	CBBC242	4.90	A03
	CBBC243	5.40	
GBBC245	CBBC201	--	A02
	CBBC242	6.40	A03
GBBC246	CBBC201	--	A02
	CBBC241	3.90	A03
	CBBC242	3.40	
	CBBC243	4.90	



\* For Coded Dimension Not Inside The Table, Please Refer To "Ordering Information"

No. of Pins/Row	Dimension Information				No. of Pins/Row	Dimension Information				No. of Pins/Row	Dimension Information			
	A	B	C	D		A	B	C	D		A	B	C	D
					11	8.00	10.70	9.80	9.20	21	16.00	18.70	17.80	17.20
					12	8.80	11.50	10.60	10.00	22	16.80	19.50	18.60	18.00
					13	9.60	12.30	11.40	10.80	23	17.60	20.30	19.40	18.80
04	2.40	5.10	4.20	3.60	14	10.40	13.10	12.20	11.60	24	18.40	21.10	20.20	19.60
05	3.20	5.90	5.00	4.40	15	11.20	13.90	13.00	12.40	25	19.20	21.90	21.00	20.40
06	4.00	6.70	5.80	5.20	16	12.00	14.70	13.80	13.20					
07	4.80	7.50	6.60	6.00	17	12.80	15.50	14.60	14.00					
08	5.60	8.30	7.40	6.80	18	13.60	16.30	15.40	14.80					
09	6.40	9.10	8.20	7.60	19	14.40	17.10	16.20	15.60					
10	7.20	9.90	9.00	8.40	20	15.20	17.90	17.00	16.40					

## Ordering Information

Standard Packaging : Tube

GBBC2  -   B001DEAC

Height Option (L / L1)      No. of Pins per Row      Standard Plating

: L=3.30 / L1=1.80             : Gold Flash

: L=3.80 / L1=1.80      ?      Selective Plating

: L=4.30 / L1=2.30             : Tin

: L=4.80 / L1=2.30

: L=5.30 / L1=2.30

: L=2.80 / L1=1.80